

Furniture

FOR PROFESSIONAL USE

Xirbi



Xirbi

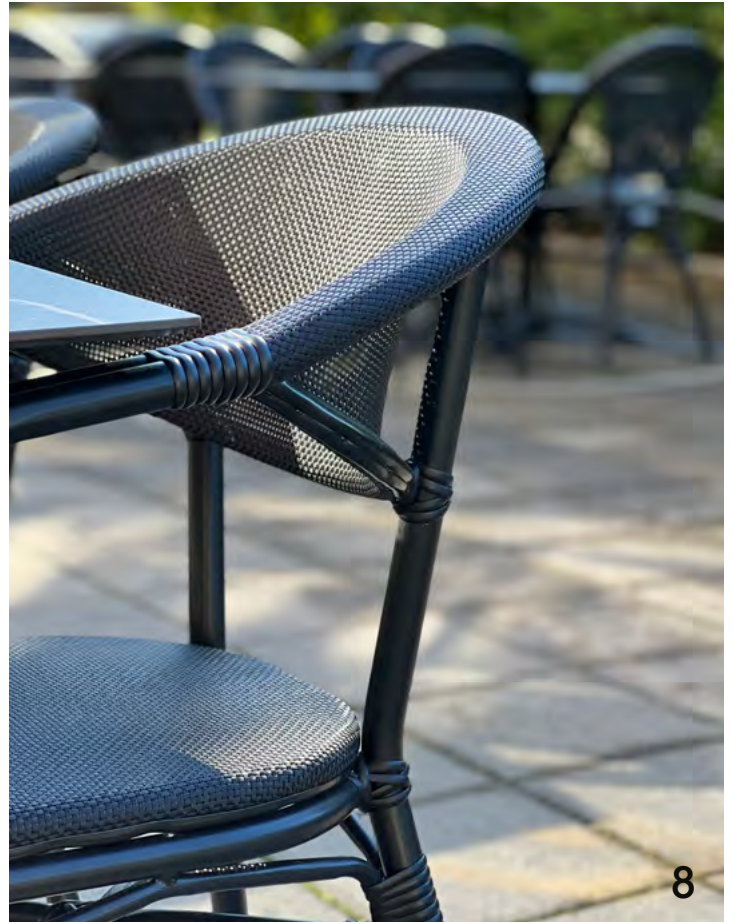
Xirbi is a generous range of furniture developed to meet the tough demands of outdoor public spaces.

Each piece in the collection is manufactured with a focus on durability and ease of use.

That our furniture is of high-quality and on trend is also extremely important to us.



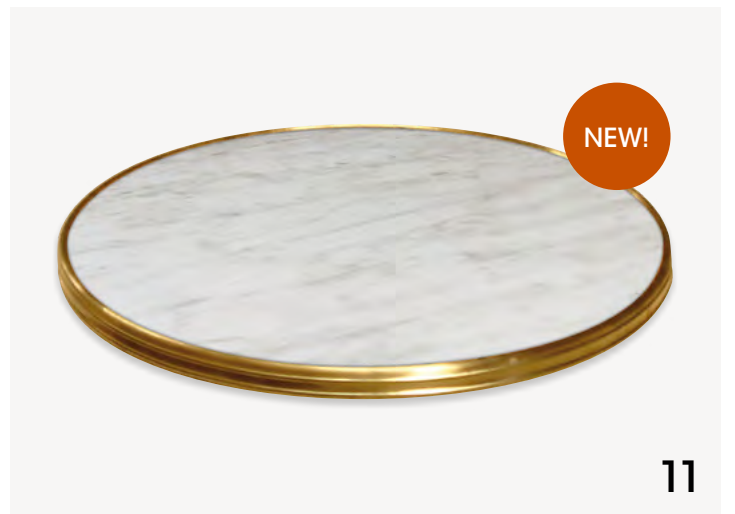
5



8



9



11

Content

Chairs	5-7
Armchairs	8-9
Stools	10
Table tops	11-12
Table tops special	13-14
Table bases	15-17
Other accessories	18



18

Seating furniture

Diverse seating furniture for all tastes.

In our range, we offer various styles, including different types of chairs, armchairs, and bar stools. Create variation and maximize the number of seats according to your preferences. Note that all our seating is equipped with one or more reinforcements to ensure long-lasting durability.

Reinforcements and materials

Cross-reinforcement (1) means that the seat is reinforced with a cross-shaped piece for additional support and stability, prolonging the lifespan of the chairs.

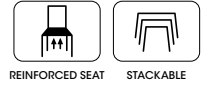
Woven reinforcement (2) means that the seat is strengthened with a braided thread. The thread enhances the durability of the chair's seat and also helps ensure a comfortable seating experience as the threads provide elevation to the chair's seat.

Synthetic rattan has a very natural look and is an obvious choice over natural rattan, as it is far more durable and can withstand external stresses such as weather, dirt and colour fading due to sunlight.

Textilene is a lightweight, durable and comfortable synthetic material that ensure a comfortable seat. The chair is easy to clean and highly resistant to stresses such as mould, dirt and colour fading due to sunlight.



PARIS

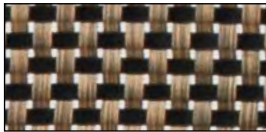


One of the most iconic chairs on the market.

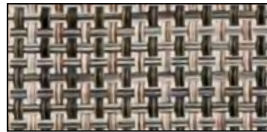
Many cafes and restaurants have chosen this bestseller as their top preference. It's easy to see why. The frame is built with a 28 mm diameter aluminium structure. The seat and back are crafted from textiline or synthetic rattan, available in various colour combinations.



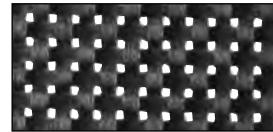
Size: W48 x D58 x H88 cm
Seat: 46 cm
Color: Brown | Black/brown
Art.no: 78577



Size: W48 x D58 x H88 cm
Seat: 46 cm
Color: Dark grey | Khaki
Art.no: 78593



Size: W48 x D58 x H88 cm
Seat: 46 cm
Color: Black | Black
Art.no: 78578



Size: W47 x D56 x H88 cm
Seat: 46 cm
Color: Nature | Burgundy/creme
Art.no: 78667



Size: W47 x D56 x H88 cm
Seat: 46 cm
Color: Nature | Green/creme
Art.no: 78666

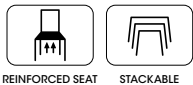


Size: W47 x D56 x H88 cm
Seat: 46 cm
Color: Black | Black
Art.no: 78626



Xirbi

CALAIS



A bright, French-inspired bistro chair.

The chair has an Ø 28 mm aluminium frame, with a bamboo look, which gives it a natural feel. The seat and back consist of a bright rattan fibre, with a warm look. Cross-reinforced and braid-reinforced seat.

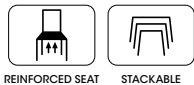


Size: W47 x D56 x H88 cm
Seat: H46 cm
Color: Nature | Creme
Art.no: 78668



Xirbi

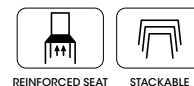
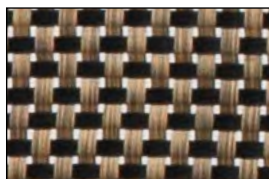
RENNES



A chair suitable for both indoor and outdoor use.

Rennes is a timeless chair with clean lines and sparse décor, which means it is always in style, regardless of trends. The chair has an aluminium frame, which makes it easy to move around. The seat is both cross-reinforced and braid-reinforced, and made of materials that can withstand environmental factors such as rain, sun, wind and moisture.

Size: W43 x D59 x H88 cm
 Seat: H45 cm
 Color: Brown | Black/brown
 Art.no: 78574

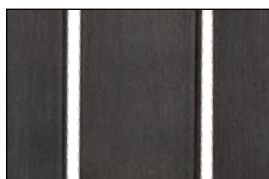


LAVAL

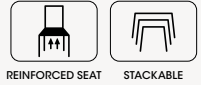
A sustainable and choice with polywood.

The seat and back are made of polywood, an highly durable and weatherproof, wood-like material made of recycled plastic. Not only does the chair have a painted surface, but the material is also dyed throughout, which minimises visible wear and tear. The frame is of fully welded aluminium, with a black, powder-coated surface. Cross-reinforced seat.

Size: W46 x D53 x H85,5 cm
 Seat: H46 cm
 Color: Black | Granite
 Art.no: 78670 - EXPIRING



Xirbi



MONACO

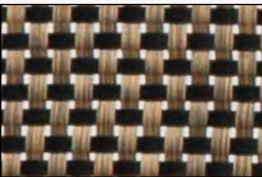
Armchairs

A classic armchair with support for your back and arms.

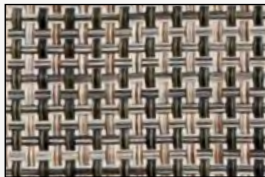
The armchair has a Ø 28 mm aluminium frame, which makes it lightweight and easy to handle. The seat and back are made of durable texteline, available in three different colour combinations.



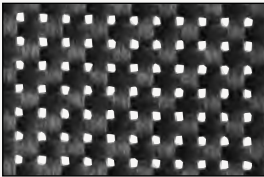
Size: W57 x D58 x H82 cm
Seat: H46 cm
Color: Brown | Black/brown
Art.no: 78576



Size: W57 x D58 x H82 cm
Seat: H46 cm
Color: Dark Gray | Khaki Melange
Art.no: 78657



Size: W57 x D58 x H82 cm
Seat: H46 cm
Color: Black | Black
Art.no: 78591



Armchairs 78657, table top 78650, table base 78239.





REINFORCED SEAT



STACKABLE

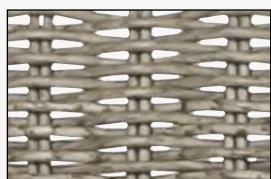
ALU-BISTRO

A braided rattan fibre armchair.

This armchair is made of round, synthetic rattan fibres with a 4 mm steel wire core, which provides increased reinforcement and long-term durability. Ø 30 mm aluminium frame.

Size: W55 x D59 x H76 cm
Seat: H45 cm
Color: Aluminium | Svart
Art.no: 78153

Color: Aluminium | Khaki
Art.no: 78637

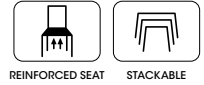


Armchairs



Xirbi

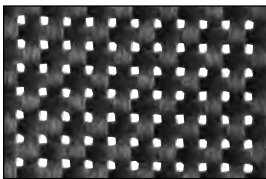
BARPALL



Maximize the number of seats for your restaurant guests.

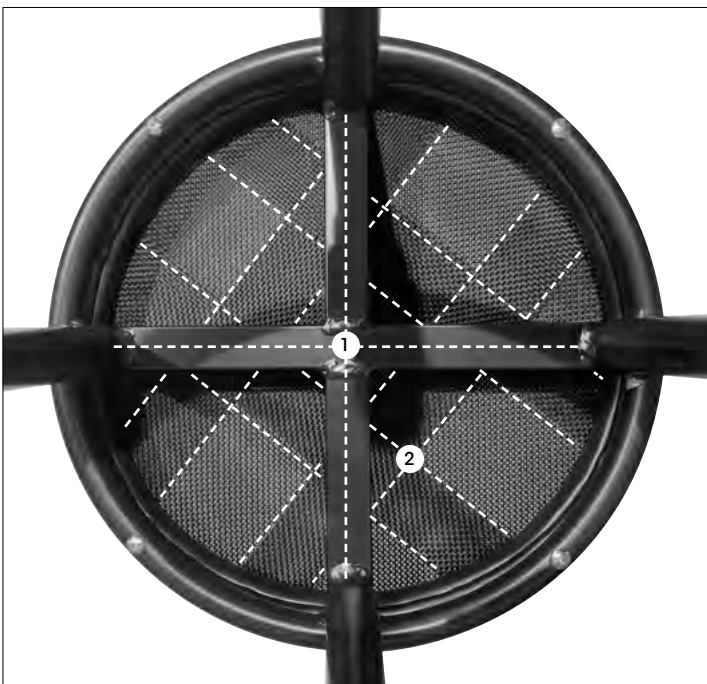
Bar stools are a simple and cost-effective solution to create additional seating. They can be placed along a wall, in a corner, or in front of the bar, both indoors and outdoors. The stool is made with a Ø 28 mm black-lacquered aluminum frame with a comfortable footrest. The seat is reinforced and made of textilene.

Size: W47 x D47 x H75 cm
Seat: H75 cm
Color: Black | Black
Art.no: 78594



1. Cross-reinforcement in aluminum for extra stability.
2. Woven-reinforced seat in textilene to ensure a comfortable seating experience.

Bar stool 78594, table top 78650, bar table base 78590.



Xirbi

Table tops

Durable table tops for outdoor environments.

User-friendly table tops designed for the professional setting. Materials such as stone, laminated composite, and compact laminate offer high durability in various weather conditions. Create an inviting outdoor environment with our high-quality table tops.



MARBLE - Werzalit® Classic

Size: 70x70 cm Thickness: 35 mm Art.no: 78046



MARBLE - Werzalit® Classic

Size: 110x70 cm Thickness: 35 mm Art.no: 78055



NEW!

GENES MARBLE - Werzalit® Bistro - **NEW!**

Size: Ø 60 cm Thickness: 26 mm Art.no: 78902



CITY - Werzalit® Classic

Size: 60x60 cm Thickness: 35 mm Art.no: 78827



CITY - Werzalit® Classic

Size: 70x70 cm Thickness: 35 mm Art.no: 78825



CITY - Werzalit® Classic

Size: 110x70 cm Thickness: 35 mm Art.no: 78100



CITY - Werzalit® Classic

Size: Ø 60 cm Thickness: 26 mm Art.no: 78828



CITY - Werzalit® Classic

Size: Ø 70 cm Thickness: 26 mm Art.no: 78826

Werzalit® Classic

A molded, laminated top with a smooth finish that requires minimal maintenance. It is extremely durable and does not lose its gloss or color over time.

Werzalit® Bistro

A molded, laminated top adorned with a decorative frame. Easy to clean, requires minimal maintenance, and retains its color over time.



WHITE - Sintered stone table

Size: Ø 60 cm Thickness: 12 mm Art.no: 78651



WHITE - Sintered stone table

Size: Ø 70 cm Thickness: 12 mm Art.no: 78671



BLACK - Sintered stone table

Size: Ø 60 cm Thickness: 12 mm Art.no: 78650



BLACK - Sintered stone table

Size: Ø 70 cm Tjocklek: 12 mm Art.no: 78672



TEAK - Topalit® Classicline - EXPIRING

Size: Ø 60 cm Thickness: 26 mm Art.no: 78468



MESSINA OAK - Topalit® Classicline - EXPIRING

Size: Ø 60 cm Thickness: 26 mm Art.no: 78638



CONCRETE - Topalit® Classicline- EXPIRING

Size: Ø 90 cm Thickness: 26 mm Art.no: 78678



WHITE WOOD - Topalit® Classicline - EXPIRING

Size: 70x70 cm Thickness: 34 mm Art.no: 78676



ALPINE MAPLE - Topalit® Classicline- EXPIRING

Size: 70x70 cm Thickness: 34 mm Art.no: 78674

Sintered stone table tops

Made of natural kaolin clay that has been sintered at a temperature of 1200°C. This process makes the material harder than stainless steel and extremely resistant to high temperatures, abrasion and staining. Pre-drilled M6 threads.

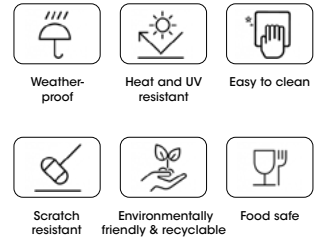
Topalit® Classicline

The pore-free surface is easy to clean and can withstand tough treatment. The outer layer has high UV resistance and can withstand temperatures of up to 180°C.

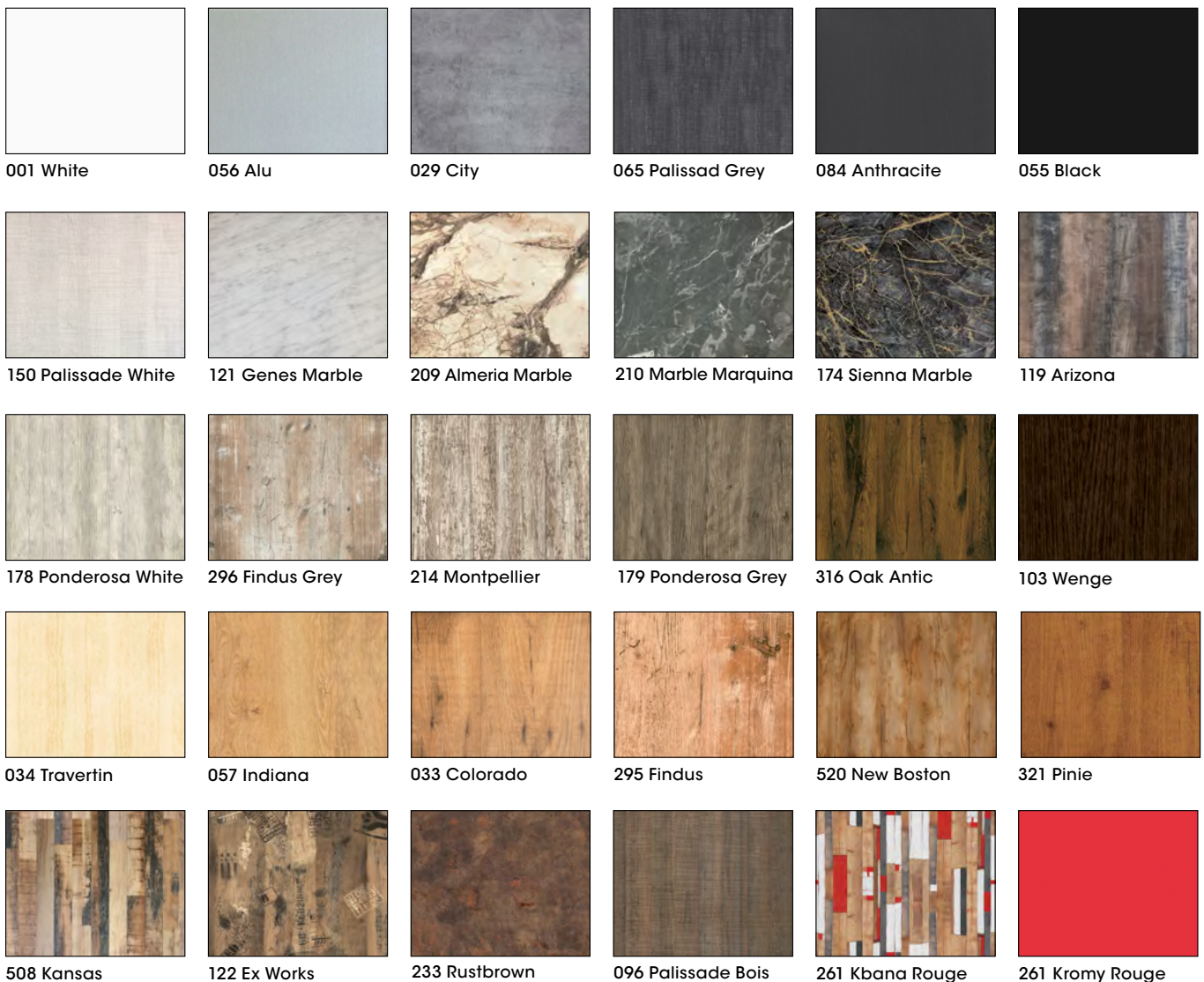
Customize your table tops!

Design your own, personalized table tops.

In collaboration with Werzalit®, we provide you with the chance to personalize your table tops to match your preferences. Explore a diverse selection of colours, patterns, series, and sizes to craft the ideal table that suits you perfectly.



Choose between 30 different colours and patterns



Please note that custom table tops cannot be ordered from our website. Please contact your sales representative for orders or more information. The delivery time is approximately 3-6 weeks after the order has been approved.

The Classic series is a timeless favorite among table tops.

High-quality, molded table tops designed to withstand all types of weather conditions. The laminated surface resists pressures such as scratches, chemicals, heat, and moisture.

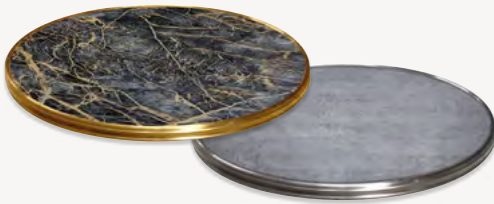


werzalit
since 1923.

Shape	Thickness	Size
○	26 mm	Ø 60 cm
		Ø 70 cm
□	35 mm	60x60 cm
		70x70 cm
		80x80 cm

Upgrade your table top with an exclusive frame from the Bistro series.

Give your table tops from the Classic series a stylish boost with these decorative frames. Not only do they add an elegant touch, but they also provide protection to the edges. Choose from glossy or brushed finishes in chrome and brass for a sophisticated look.



werzalit
since 1923.

Shape	Thickness	Edge	Size
○	26 mm		Ø 60 cm
			Ø 70 cm
□	35 mm		55x55 cm
			60x60 cm
			70x70 cm

Carino is a series of thin and elegant table tops.

The series offers compact laminate, a hard, scratch-resistant, and maintenance-free material suitable for both indoor and outdoor use. Mix different shapes and sizes to create variety and a more dynamic environment.



werzalit
since 1923.

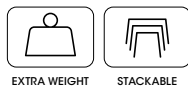
Shape	Thickness	Edge	Size
○	10-12 mm		Ø 60 cm
			Ø 70 cm
			Ø 80 cm
			Ø 90 cm
□	10-12 mm		50x50 cm
			60x60 cm
			70x70 cm
			80x80 cm
			90x90 cm
□	10-12 mm		70x60 cm
			100x60 cm
			110x70 cm
			120x80 cm
			140x70 cm
			160x80 cm
			160x90 cm

Table bases

Effortless table bases made for professional settings.

Crafted from lightweight aluminum for easy handling, our table bases are sturdy, durable, and resistant to corrosion. Suitable for use both indoors and outdoors.

BARCELONA



Minimise storage space.

Our folding stands make it much easier to handle and store the tables. The table top can easily be folded down along the side of the stand, creating entirely new storage opportunities.

Black powder coated aluminium.

Max weight: 10 kg
 Extra weight: 3 kg
 Height: 72 cm ±
 Thread: M8
 Art.no: 78624



Xirbi





SEVILLA

Lasting elegance for both indoor and outdoor use.

One of our favorites is the table stand Sevilla. It is a durable and stylish stand made of durable aluminum. The slim shape of the base means that Sevilla fits just as well indoors as outdoors.



Aluminium.

Max weight: 10 kg
Extra weight: 2 kg
Height: 72 cm ±
Thread: M8
Art.no: 78660

PALMA



Black lacquered cast aluminium.

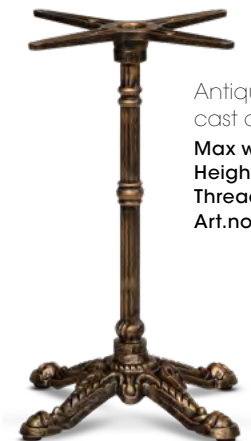
Max weight: 10 kg
Height: 72 cm ±
Thread: M8
Art.no: 78181



Black lacquered cast aluminium.

Max weight: 20 kg
Height: 72 cm ±
Thread: M8
Art.no: 78182

MADRID



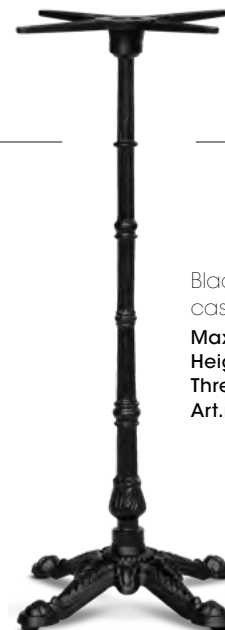
Antique brass lacquered cast aluminium.

Max weight: 10 kg
Height: 72 cm ±
Thread: M10
Art.no: 78589



Black lacquered cast aluminium

Max weight: 10 kg
Height: 72 cm ±
Thread: M10
Art.no: 78471



Black lacquered cast aluminium.

Max weight: 10 kg
Height: 110 cm ±
Thread: M10
Art.no: 78590

Xirbi



MARBELLA

Table bases



Black powder coated aluminium.

Max weight: 10 kg
Extra weight: 3 kg
Height: 72 cm ±
Thread: M8
Art.nr: 78239



Black powder coated aluminium.

Max weight: 20 kg
Extra weight: 4 kg
Height: 72 cm ±
Thread: M8
Art.no: 78240



Gray powder coated aluminium.

Max weight: 10 kg
Extra weight: 3 kg
Height: 72 cm ±
Thread: M8
Art.no: 78569 - EXPIRING



Gray powder coated aluminium.

Max weight: 20 kg
Extra weight: 4 kg
Height: 72 cm ±
Thread: M8
Art.no: 78570 - EXPIRING

VALENCIA



Aluminium.

Max weight: 10 kg
Height: 72 cm ±
Thread: M8
Art.no: 78186



Aluminium.

Max weight: 20 kg
Height: 72 cm ±
Thread: M8
Art.no: 78187

Xirbi

Accessories for table bases

Avoid wobbling tables with adjustable feet.

Easily stabilize the table on any surface with adjustable feet that fit all table bases from Xirbi. With a simple press on the tabletop, the table stabilizes on the ground surface, providing stability up to 6 mm

FLAT EQUALIZERS M8
Compatible with all Xirbi table bases except 78589, 78471, 78590.
Levereras i set om 4 st.
Art.nr: 78424

FLAT EQUALIZERS M10
Compatible till Xirbi bordsstativ 78589, 78471, 78590.
Levereras i set om 4 st.
Art.nr: 78424-10 - NEW!



Entrance equipment

Delimit and define areas in a clear and organized fashion.

Set of 2 stainless steel barrier poles and 1 braided black rope.

Height: 97 cm
Width: 32 cm
Art.no: 78597

Braided black rope to barrier pole.

Length: 150 cm
Width: 3,20 cm
Art.no: 78598



MERXTEAM

MerxTeam AB
Galvaniseringsgatan 5
41707 GÖTEBORG
Tel: +46 31 50 67 00

info@merxteam.com

merxteam.com

Xirbi